

QP-100-V

QUIET POWER GENERATOR
RENTAL SERIES

SWP
Southwest Products



Powered by **VOLVO PENTA**

Complete Power Solutions

QP-100-V

Standby Rating: 111 kVA / 88 kWe

Prime Rating: 100 kVA / 80 kWe

Southwest Products QP-100-V diesel generator is engineered from the ground-up for reliability, durability, and ease-of-use.

Built with a Volvo Penta Tier 4 Final engine and a compact, rugged design, the QP-100-V is a cost-effective alternative to larger units.

RELIABLE, STURDY, AND ENVIRONMENTALLY FRIENDLY

- Heavy-duty construction, components and paint
- Reliable 4-cycle, indirect injection, diesel engine
- Volvo Penta Tier 4 Final engine (50 state compliant)
- Oversized alternator with PMG for better motor starting
- Heavy gauge, powder coated, lockable enclosure
- Dual containment fuel cell with containment basin
- 2 year or 2,000 hour limited warranty
- Available with or without optional trailer
- Designed, engineered and assembled in USA

EXTREMELY QUIET AND FUEL EFFICIENT

- Sound attenuation for superior noise reduction
- Common rail fuel system with gear driven fuel feed pump
- Large capacity fuel cell for extended run time



FULL FEATURED CONTROL PANEL

- Digital controller with single-button start/stop and 2 wire auto-start
- Full capacity power outlets with lugs and outlets for customer connections
- Circuit breakers for GFCI and twist lock receptacles
- Voltage selection switch with utility power in all voltage modes

Contact SWP for Pricing and Availability

Surprise, AZ
602.269.3581

Signal Hill, CA
562.424.0913

Galt, CA
209.245.6000

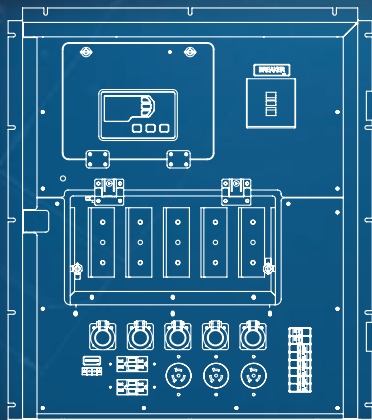
Houston, TX
832.957.6400

www.SouthwestProducts.com

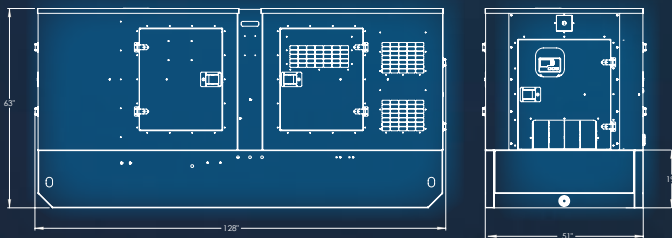
EASY TO USE CONNECTION AND SERVICE POINTS

- Up to 500 hour service intervals
- Multi-voltage switch with utility outlet power in all voltage modes
- SWP Tough Series TG410 digital genset controller
- Digital engine/generator controller with single button start/stop and 2 wire auto-start
- Optional single axle trailer 79" (W) x 186" (L)
- Custom paint and branding options available
- Single point lift

Generator Output Panel



Dimensions



TECHNICAL SPECIFICATIONS

Model	QP-100-V
Voltages	120/240 120/208 277/480
Standby Rating	111 kVA / 88 kW _e
Prime Rating	100 kVA / 80 kW _e
Engine Model	Volvo Penta TAD571VE
Alternator	Mecc Alte/STAMFORD
Sound dBA level @ 23 ft.	67.9 dBA
Main Line Circuit Breaker	400 Amps

ENCLOSURE SPECIFICATIONS

Weight - Dry	5,242 lb
Length With Trailer	186"
Width With Trailer	79"
Height With Trailer	77"
Weight With Trailer	6,342 lb
Weight Ready to Run	7,400 lb

ENGINE SPECIFICATIONS

Engine Mfg	Volvo Penta
Model Number	TAD571VE
Prime Output HP (gross)	151
Standby Output HP (gross)	168
Emissions Certification	Tier 4 Final

ALTERNATOR SPECIFICATIONS*

277/480 Volt Prime Amps	120.4
277/480 Volt Standby Amps	132.5
120/208 Volt Prime Amps	277.9
120/208 Volt Standby Amps	305.7
120/240 Volt Prime Amps	200.0
120/240 Volt Standby Amps	220.0

*125/40 C Temp Rise Class H Insulation

FUEL CONSUMPTION

Fuel Tank Capacity - Gallons	150
Fuel Consumption at Prime Rating	5.7 gal/h
25% load	-
50% load	2.8 gal/h
75% load	4.3 gal/h
100% load	5.7 gal/h
DEF Tank Capacity	45L